

FOR SOURCES OF TITLE REFER TO:
 DEED BOOK 437, PAGE 337
 DEED BOOK 430, PAGE 244

CONCRETE MONUMENT LAYOUT
 1P - SET IRON PIPES PAINTED YELLOW
 5S - SET STEEL SPIRES
 SP - SET STEEL SPINDS WITH YELLOW PLASTIC CAP
 SP - SET STEEL SPINDS WITH YELLOW PLASTIC CAP

I HEREBY CERTIFY THAT THE SURVEY SHOWN HEREON WAS PERFORMED UNDER MY DIRECTION BY THE METHOD AND MEASUREMENTS AND CALCULATIONS AND DISTANCES SHOWN HEREON HAVE BEEN ACCURATELY AND DILIGENTLY MADE AND THAT THE DISTANCES AND BEARINGS SHOWN ARE TRUE AND CORRECT.

NOVEMBER 21, 1989
 706 C. JOHNSON, REGISTERED LAND SURVEYOR
 1108 HIGHLAND AVENUE
 ASHLAND, KENTUCKY 40010

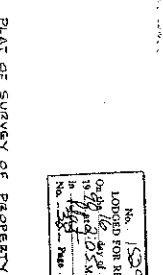
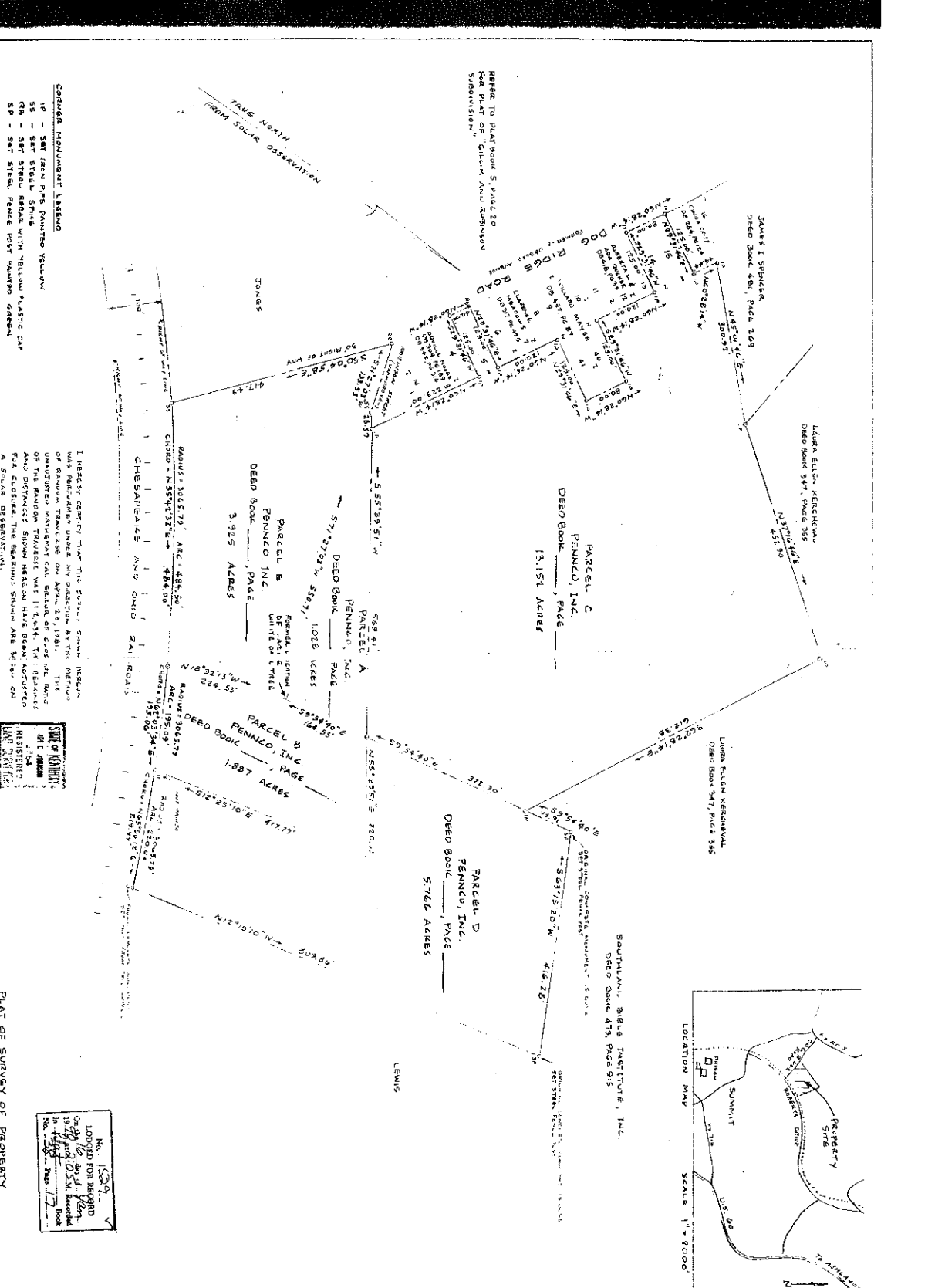
PLAT OF SURVEY OF PROPERTY
 TO BE CONVEYED TO PENNCO, INC.
 LOCATED IN BOND COUNTY, KENTUCKY

NOVEMBER 21, 1989
 SCALE: 1" = 100'

BOOK 38
 PAGE 17
 PENNCO, INC.
 BREVETTES NO. 430

LODGED FOR RECORD
 IN THE OFFICE OF THE
 CLERK OF COURTS
 IN THE COUNTY OF BOND
 KENTUCKY
 THIS 21st DAY OF NOVEMBER
 1989
 BY: [Signature]
 [Signature]

TRUE NORTH
 FROM SOLAR OBSERVATION



SCALE: 1" = 2000'

REFER TO PLAT BOOK 5, PAGE 337
 FOR PLAT OF "SUNNYSIDE AND
 SUBDIVISION"

JAMES I. SPURLOCK
 DEED BOOK 430, PAGE 168

LABRA ELLIEN KENCHUM
 DEED BOOK 347, PAGE 358

PARCEL C
 PENNCO, INC.
 DEED BOOK PAGE
 13.151 ACRES

PARCEL B
 PENNCO, INC.
 DEED BOOK PAGE
 3.925 ACRES

PARCEL A
 PENNCO, INC.
 DEED BOOK PAGE
 1.887 ACRES

PARCEL D
 PENNCO, INC.
 DEED BOOK PAGE
 5.766 ACRES

SOUTHLAND BIBLE INSTITUTE, INC.
 DEED BOOK 478, PAGE 915

LEWIS

TOMES

DOG RIDGE ROAD

CHESAPEAKE AND OHIO RAILROADS

Summit

Summit

Summit

Summit

Summit

Summit

Summit

Summit

Summit

Summit

Summit

Summit

Summit

Summit

Summit

Summit

Summit

Summit

Summit