

5800 SF HOME | 37 AC. | 2800' FAA RUNWAY

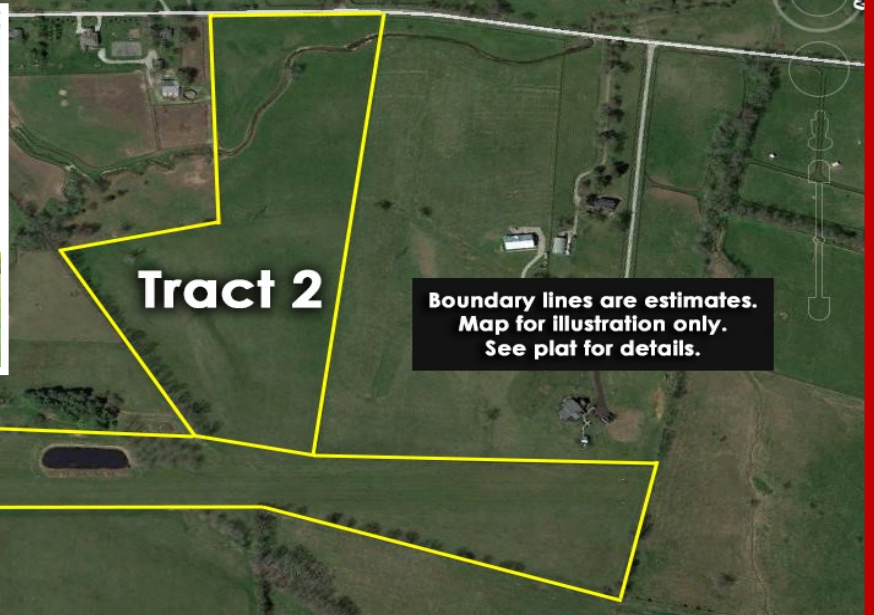
PUBLIC AUCTION

LIVE ONSITE & LIVE WEBCAST

2622 BETHLEHEM ROAD

Bourbon County - Paris, KY

DATE OF SALE: Sat. Oct. 1st @ 10:00AM



PUBLIC PREVIEWS: Sun. 9/18 & 9/25 from 2:00-4:00PM

Nestled in southern Bourbon County and just minutes from Lexington, find this Kentucky fieldstone ranch style home with full basement. Other features include an in-ground pool, professional bowling lane, 4,000 SF (+/-) hanger and 2,800' FAA approved airstrip known as Wild Blue(31KY) Airport.

Property being offered in two tracts. Tract 1 includes 18.47 acres (+/-), house, hanger and runway.

Tract 2 is 18.7 acres (+/-) with 538' of road frontage on Houston-Antioch Road.

****Visit our website for a list of personal property being sold online only****

www.HalfhillAuctions.com

Visit our website for detailed information, auction terms & conditions, and additional pictures

AUCTIONEER

JIM HALFHILL, SR.

(859) 338-5764

halfhill@rhr.com

**HALFHILL AUCTION GROUP
At RECTOR HAYDEN REALTORS®**

AGENT

GARY DENTON

(859) 338-1297

garydenton@rhr.com

RECTOR HAYDEN REALTORS®

AGENT

TAMMY PREWITT

(859) 806-3388

tammyprewitt@rhr.com

RECTOR HAYDEN REALTORS®

